

SERIES 1005E ELECTRIC LIQUID LEVEL SWITCH

Description:

The Norriseal series 1005E is a float actuated electric switch that opens or closes an electric circuit. The 1005E body is furnished in 1.5" or 2.0" NPT size and the material is either carbon steel (plated) or 316 stainless steel. The electric miniature switch can be furnished in SPDT or DPDT. The unit is CSA listed as explosion proof and NEMA 4.

Application:

The series 1005E switch is designed for "rugged" use and can be used as a high or low level alarm to monitor liquid level in compressor scrubbers and other type pressure vessels. This unit is also available for NACE applications.

Accessories:

Small external horizontal float chambers (Style V) are available for applications that require external mounting of the 1005E switch.

Specifications:

Body	Size	1.50" & 2.00"
	Material	Carbon Steel Pltd. 316 Stainless Steel
	Pressure Rating	1.50" 1000 PSIG 2.00" 2000 PSIG
	Float	Material
	Pressure Rating	316 Stainless Steel 1500 PSIG Polypropylene 2000 PSIG
	Temp. Rating	316 Stainless Steel 220° F Polypropylene 140° F
	Specific Gravity	316 Stainless Steel 0.60 Polypropylene 0.70

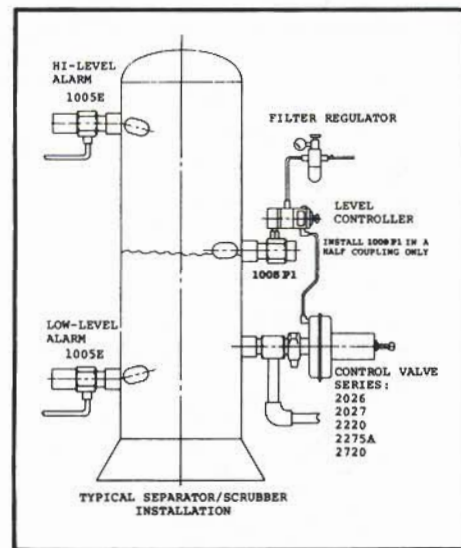
Seals Viton (Std.) Buna-N and EPR (Opt.)

Switch

Single Pole	10 AMP, 1/2 H.P. @ 125/250 VAC;
Double Throw	1/2 AMP @ 125 VDC; 1/4 AMP @ 250 VDC
Double Pole	10 AMP, 1/2 H.P. @ 125/250 VAC;
Double Throw	1/2 AMP @ 125 VDC; 1/4 AMP @ 250 VDC

Features

- High or Low Liquid Level Monitor
- 316 Body Material
- NACE Materials
- CSA Listed (Class 1, Group C & D Hazardous Locations)
- NEMA 4



HOW TO ORDER

1. Specify Series 1005E

2. Select Model Number

Example: 0316-AVS

BODY MATERIAL	CODE
Carbon Steel (1018)	1018
316 SST	0316

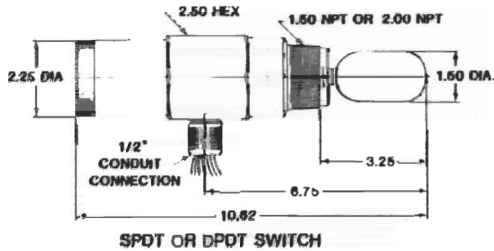
ARM/STEM MATERIAL	CODE
ST. STL.	-
ST. STL.*	N

*NACE MR 01-75

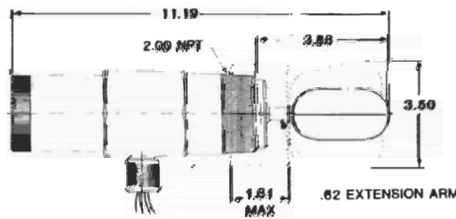
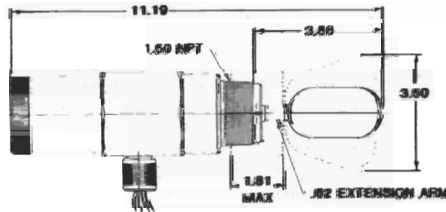
CODE	SWITCH TYPE	RATING
S	Single Pole Double Throw	10 AMP, 1/2 H.P. @ 125/250 VAC; 1/2 AMP @ 125 VDC; 1/4 AMP @ 250 VDC
D	Double Pole Double Throw	10 AMP, 1/2 H.P. @ 125/250 VAC; 1/2 AMP @ 125 VDC; 1/4 AMP @ 250 VDC

CODE	SEAL MATERIAL
B	Buna N
E	EPR
V	*Viton (Std)

*Also Standard For NACE Applications
Registered U.S. Patent Office For Du Pont's Fluoroclastomer

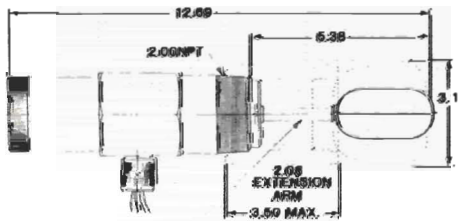
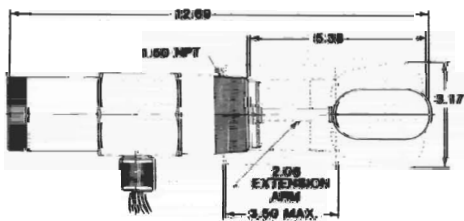


BODY / FLOAT COMBINATIONS					
Code	Process Connection	Max. Pressure PSIG	Max. Temp. °F	Float Material	Min. Sp. Gr.
A	1.50	1000	220	316 SST	.60
B	2.00	1500	220	316 SST	.60
C	2.00	2000	140	Poly.	.70

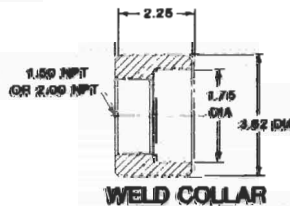
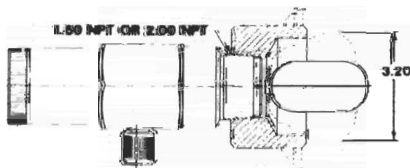


Note: All Dimensions Are In Inches

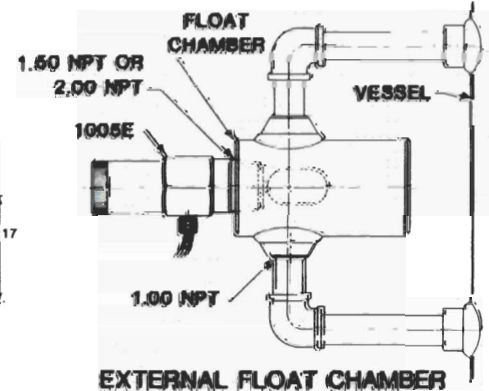
A .62 extension arm must be used when unit is installed in a half coupling, threaded or reducing bushing. This reduces the minimum specific gravity to 0.65 with the stainless float and 0.85 with the polypropylene float.



A 2.06 extension arm must be used when unit is installed in a full coupling. This reduces the minimum specific gravity to 0.75 with the stainless float and 0.92 with the polypropylene float.



When using the Dover weld collar or external float chamber, no extension arm is needed. The minimum specific gravity is 0.60 with the stainless float and 0.70 with the polypropylene float.



P.O. Box 40525 Houston, Texas 77240 0525
Phone: (713) 466-3552 * Fax: (713) 896-7386

www.morrisseal.com