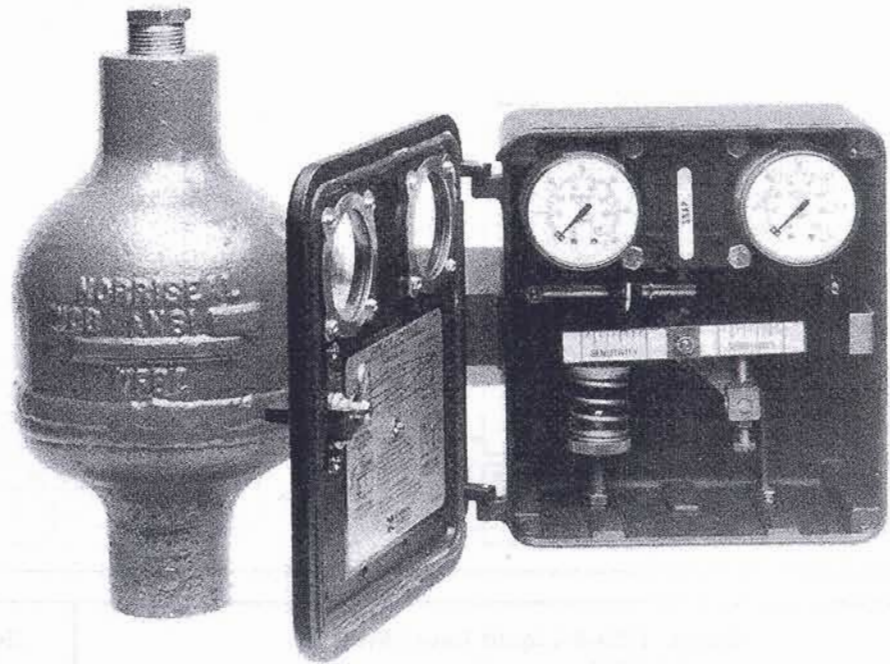


SERIES 1100-A LIQUID LEVEL SWITCHES

High/Low Pneumatic and Electric Liquid Level Switches



DESCRIPTION

Norriseal Series 1100-A High/Low Pneumatic or Electric Liquid Level Switch. The 1100-A utilizes the Series 1001-A Liquid Level Controller and a cast steel vertical displacer chamber.

Applications

- Gas Compressor Scrubbers
- Separators
- Sumps
- Safety Systems

Special Features

- Pneumatic or Electric Controller
- Stainless Steel Internals for Marine Service
- Weathertight case
- Stainless Steel Displacer
- Left- or Right-Hand Mount
- Direct or Reverse Acting
- **Optional** NACE MR-01-75
- **Optional** 2220 psi W.P. (ANSI 900)

SPECIFICATIONS

Chamber:

- 1480 psi W.P. (ANSI 600) at 100° F.
- Process Connections:
1.00 Screwed NPT; 1.00" Socket Weld;
2.00" Butt Weld
- Cast Steel ASTM A216-WCB
- Displacer Material 304 SST
- Weight: 46 lbs.

Controller:

Pilot Action:

- Pneumatic - Snap (on/off)
- Electric - SPDT/DPDT (on/off)
- Maximum Temperature: 400° F.
- Minimum Air Supply: 20 psi
- Minimum Specific Gravity:
 - 0.5 (Snap Pilot, SPDT)
 - 0.6 (Relief Pilot)
 - 0.7 (DPDT)

Example: 1 SC 14 - S R D F - A E

PROCESS CONNECTION SIZE	CODE
1.00	1
2.00	2

PROCESS CONNECTION TYPE	CODE
NPT (SCREWED FEMALE)	SC
SOCKET WELD	SW
*BUTT-WELD SCH. 40	B4
*BUTT-WELD SCH. 80	B8
*BUTT-WELD SCH. 160	B1
FLANGED RAISED FACE	RF
FLANGED RING JOINT	RJ

*END CONNECTIONS ONLY

PRESSURE RATING		CODE
ANSI CLASS	WP (PSI)	
150	285	02
300	740	07
600	1480	14
900	2220	21

PILOT MODE	CODE
ELE. DPDT EXPLOSION PROOF	D
ELE. SPDT EXPLOSION PROOF	E
ELE. DPDT SPLASH PROOF	F
PNEUMATIC RELIEF W/GAGES	R
PNEUMATIC SNAP W/GAGES	S

MOUNTING CASE	CODE
LEFT HAND	L
RIGHT HAND	R

CODE	Pressure Connection Orientation
—	NPT-Specify Plug Placement
A	SIDE TOP / SIDE BOTTOM
B	SIDE TOP / BOTTOM
C	TOP / SIDE BOTTOM
D	TOP / BOTTOM
E	ALL 4 CONNECTIONS

CODE	CLOSURE - CASE
G	SEALED CASE/COVER
H	SEALED CASE/COVER & PIPED EXHAUST
J	SEALED CASE/COVER, PIPED EXHAUST AND MARINE SERVICE
K	SEALED CASE/COVER MARINE SERVICE

CODE	SERVICE CONDITION
A	STANDARD 0-60 GAGES
D	LIQUID FILLED BRASS GAGES/ VIBRATION PILOT
E	LIQUID FILLED SST GAGES/ VIBRATION PILOT

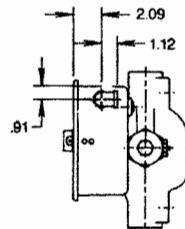
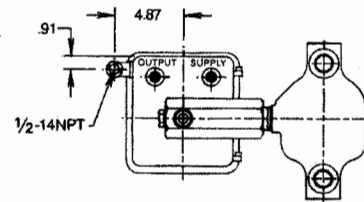
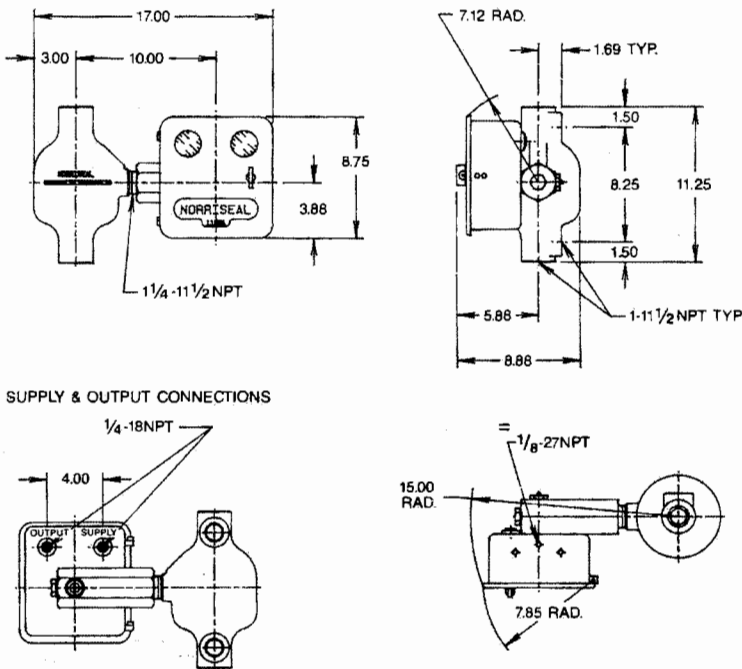
CODE	SEAL/BEARING MATERIAL
F	*VITN/SST

*STD. SEAL/BEARING MATERIAL
CONSULT FACTORY FOR OPTIONS

CODE	PILOT ACTION
R	REVERSE ACTING
D	DIRECT ACTING

Series 1100-A Liquid Level Switch
1.00 NPT Process Connections
Left-Hand Mount, Pneumatic Pilot

Series 1100-A Liquid Level Switch
1.00 NPT Process Connections
Left-Hand Mount, Electric Switch



All dimensions in inches; all dimensions are applicable for 1.00" socket weld and 2.00" butt weld.