

# SERIES 8760P & 8760E VALVE POSITIONER

## FEATURES

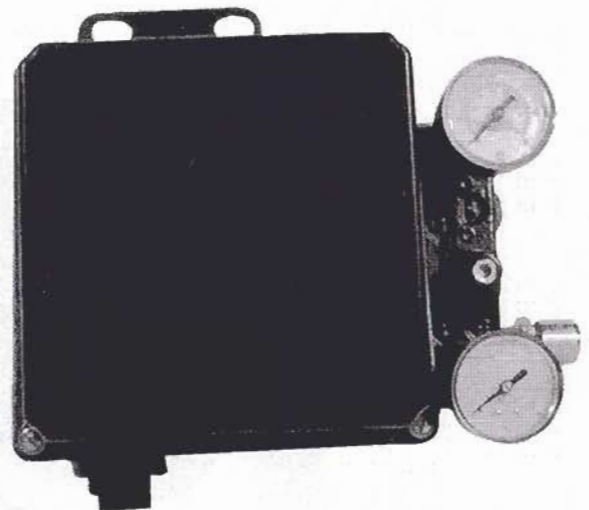
- **Modular Construction**  
8760P (Pneumatic) = Base Pneumatic Unit  
8760E (Electronic) = 8760P + I/P Transducer  
Field Convertible
- **Easy to Calibrate**  
Non-Interacting Zero and Span
- **Universal Mounting**  
NAMUR IEC 534-6 Rectilinear  
VDI/VDE 3845 Rotary
- **Internal Limit Switches and Feedback Devices**

## DESCRIPTION

The Series 8760 Valve Controllers (Valve Positioners) provide an intelligent approach to your valve control applications. The Series is modular in concept. All models are built on the base pneumatic unit, 8760P. The Electro-Pneumatic model, Model 8760E, is created by adapting an I/P Transducer to the base unit.

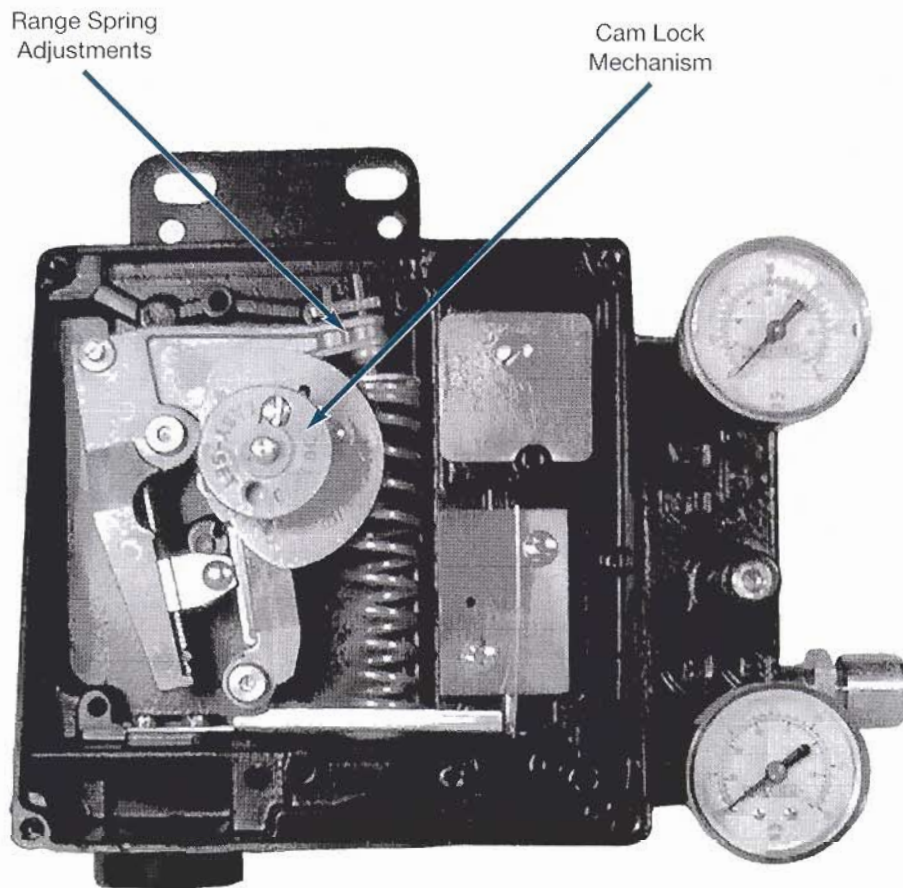
The Model 8760P is designed to provide a universal approach to valve control. The design provides cam characterization, split ranging, direct or reverse action and single or double output without the need to add additional parts. Key features of the design are the non-interaction of the zero and span adjustments, and the positive cam locking mechanism. This turns calibration of the Models 8760P & E into two easy steps.

All Models of the Series 8760 Valve Controllers have provisions for mounting of internal limit switches as well as position feedback devices without the need for additional housings. Stacking of housings that impede access to adjustments in the main enclosure are eliminated.



# EASY CALIBRATION ADJUSTMENTS

The Series 8760 Valve Positioner has been designed to minimize calibration. All required adjustments can be made with a simple screwdriver. The non-interacting zero and span adjustments are simple and easy. Once the correct cam lobe has been selected, set the cam to the Rough Zero position, establish a "zero" input signal (3 psig or 4 mA) and adjust the "zero." Increase the input to full scale (15 psig or 20 mA) and adjust the "span." Note that regardless of the input, pneumatic or electric, the zero and span are the only adjustments required.



## SPECIFICATIONS

Temperature Range: -40 to 85 °C

Ingress: NEMA 4X std.

Connections: Pneumatic – 1/4" NPT

Gauge – 1/8" NPT

Electrical – 3/4" NPT, 25 mm

Exhaust – 1/4" NPT

Finish: Epoxy/Polyester Powder Coat

Output Configuration: Single or Double Acting

Action: Direct or Reverse

Supply Pressure: 150 psig max.

Air Consumption: 0.5 scfm typical

Flow Capacity:

9.0 scfm ( $C_v = 0.3$ ) Standard

20.0 scfm ( $C_v = 0.6$ ) Optional High-Flow

Input Signal:

8760P: 3-15 psig, 6-30 psig up to 50% split range

8760E: 4-20 mA, up to 50% split range

Feedback Signal: 90 deg, rotary std.

1/2" to 6" rectilinear optional

Feedback Configuration: Cam Characterization

Pressure Gain: 160% @ 60 psig supply standard

Span: Adjustable -60% to +25% of normal span

Zero: Adjustable -10% to +60% of normal span

## PERFORMANCE SPECIFICATIONS

Linearity (Independent):

8760P: 0.5% of normal span (typical)

8760E: 0.75% of normal span (typical)

Hysteresis:

8760P: 0.75% of normal span (typical)

8760E: 1.0% of normal span (typical)

Deadband: Less than or equal to 0.25% of span

Repeatability: Within 0.5% of span

Supply Pressure Effect: Less than 0.2% of span for  
a 5 psi change in supply pressure

## OPTIONS

Limit Switches

– Mechanical SPDT 10A @ 125/250 VAC  
10A @ 24VDC, 0.1A @ 125 VDC

– Proximity

(see barrier instructions for power rating)

Position Transmitter

– Current Feedback 4-20 mA DC

– Resistive Feedback 1K ohm (90°),  
666 ohm (60°)

Beacon Indicator

Mounting Kits

## ELECTRICAL CLASSIFICATIONS

FM Approval:

Intrinsically Safe, Entity:

Class I, Division 1, Groups A, B, C, D;

Class II, Division 1, Groups E, F, G;

Class III, Division 1; when installed in

accordance with Moore Products Co.

drawing 15032-7602 rev.1

Non-Incendive:

Class I, Division 2, Groups A, B, C, D

Suitable for: Class II, Division 2, Groups E, F, G

Class III, Division 2

CSA Certification:

Intrinsically Safe:

Class I, Division 1, Groups A, B, C, D;

Class II, Division 1, Groups E, F, G;

Class III, Division 1; when installed in

accordance with MPCo drawing

15032-7602

Suitable for:

Class I, Division 2, Groups A, B, C, D

Class II, Division 2, Groups E, F, G

Class III, Division 2

GENELEC: EEx ia IIC T4/T5/T6

SIRA: Ex N IIC T5

Enclosure: NEMA Type 4X  
IP65

## ORDERING INFORMATION

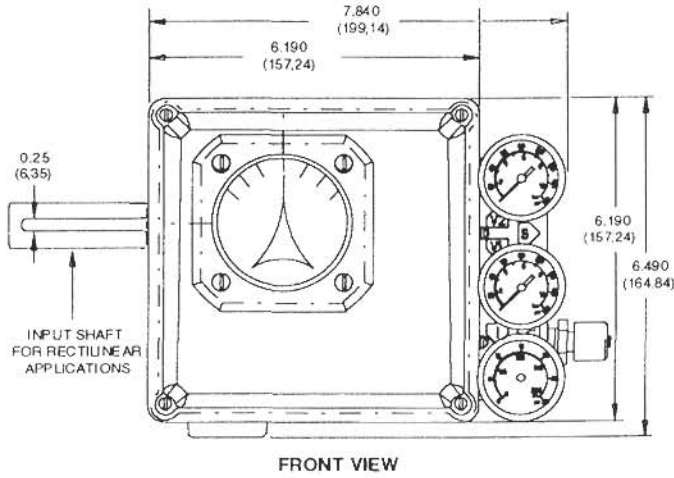
Specify Series number selecting:

- Input
- Action
- Enclosure
- Flow Capacity
- Gauges
- Limit Switches
- Feedback
- Electrical Certification
- Bypass
- Filter/Regulator
- Indicator

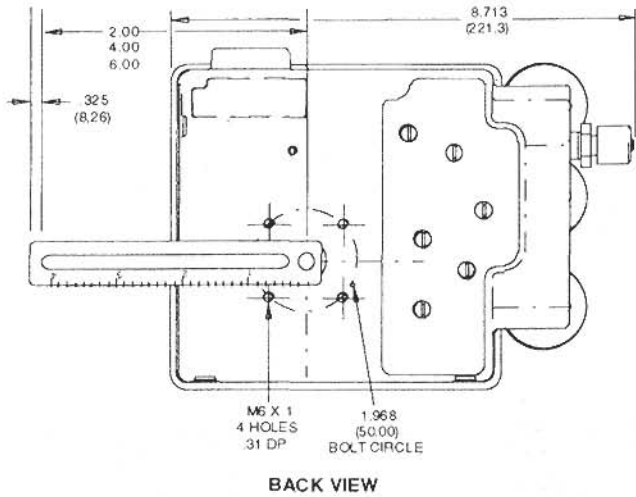
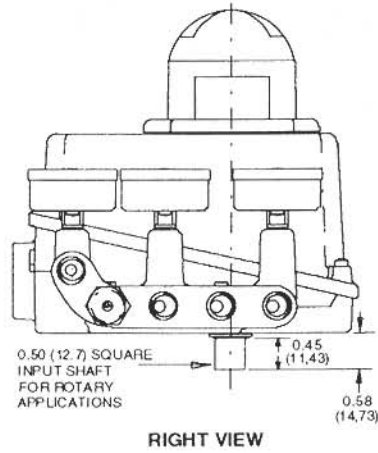
# DIMENSIONS

INCHES (millimeters)

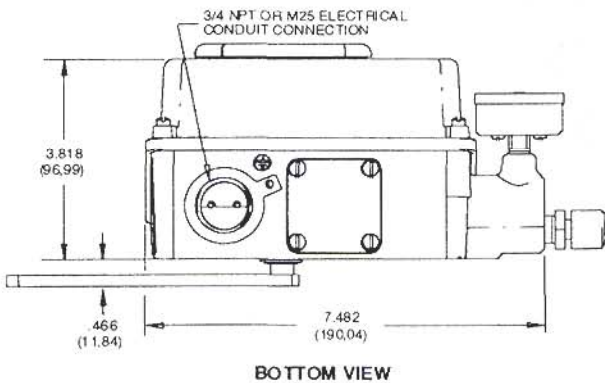
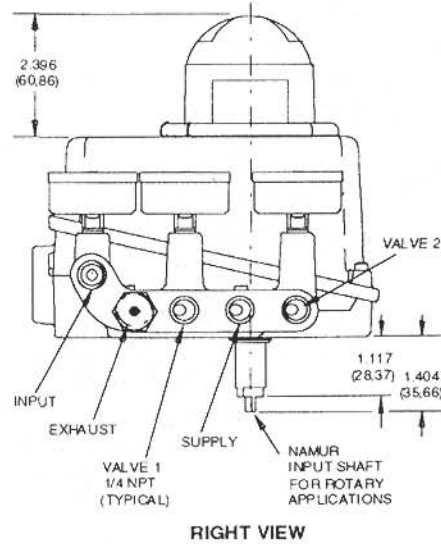
## RIISING STEM APPLICATION



## ROTARY APPLICATION



## ROTARY APPLICATION



Manufactured by Moore Products Co.

Solutions through engineered products.



Company Headquarters, Manufacturing Plant & International Sales  
 P.O. Box 40525 • Houston, TX 77240-0525  
 11122 West Little York • Houston, TX 77041-5016  
 (713) 466-3552 • Fax (713) 896-7386  
[www.norriseal.com](http://www.norriseal.com)